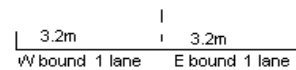
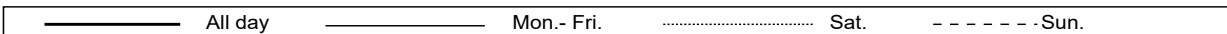
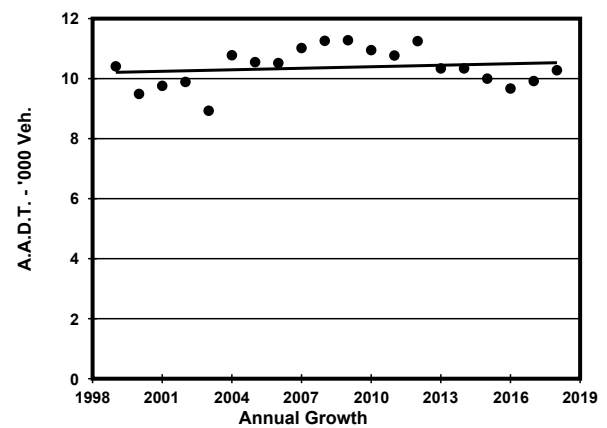
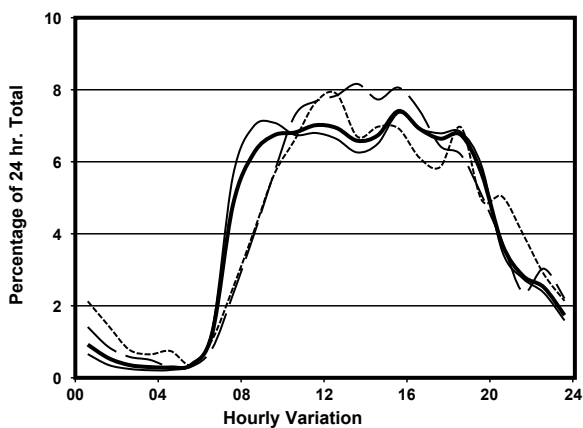
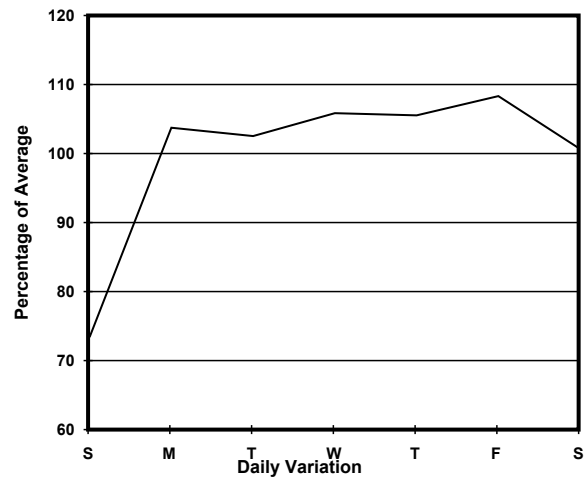
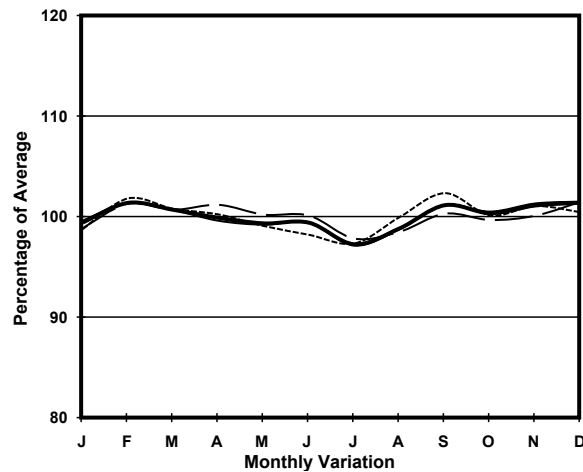


YEAR 2018
 COVERAGE (B) STATION 2213
 ROAD NETWORK MAJOR
 ROAD TYPE DISTRICT DISTRIBUTOR

LINK KENNEDY RD (from MACDONNELL RD to QUEEN'S RD E)



1. TRAFFIC FLOW VARIATION AND GROWTH



2. TRAFFIC CHARACTERISTICS (BY DIRECTION)

Parameter	All - Day	Mon. - Fri.	Sat.	Sun.
EAST BOUND				
A.A.D.T.	6820	7270	7080	5000
R 12 / 24 - %	79.9	80.8	79.4	74.4
R 16 / 24 - %	94.6	95.4	93.4	90.7
AM Peak Hour	0900-1000	0800-0900	0900-1000	0900-1000
One-way flow at AM peak hour	440	500	400	300
T - % (AM)	-	2.1	-	-
PM Peak Hour	1600-1700	1600-1700	1600-1700	1800-1900
One-way flow at PM peak hour	490	520	530	340
T - % (PM)	-	4.3	-	-
Prop.of commercial vehicles - 16 hr.	-	2.2	-	-
WEST BOUND				
A.A.D.T.	3460	3700	3420	2660
R 12 / 24 - %	78.8	79.9	77.5	72.8
R 16 / 24 - %	93.7	94.3	92.3	90.6
AM Peak Hour	0900-1000	0900-1000	0900-1000	0900-1000
One-way flow at AM peak hour	250	290	200	130
T - % (AM)	-	4	-	-
PM Peak Hour	1700-1800	1700-1800	1600-1700	1800-1900
One-way flow at PM peak hour	250	270	250	190
T - % (PM)	-	1.9	-	-
Prop.of commercial vehicles - 16 hr.	-	1.4	-	-

3. OTHER INFORMATION AND COMMENT

4. Vehicle classification and occupancy - Monday to Friday

Time		Class of vehicle									
		Motor Cycle	Private Car	Taxi	Private LB	PLB	Goods veh.		Non Fr. Bus	Fr. Bus	
							Light	M & H		SD	DD
0700-0800	Pro	4.8	32.1	31.0	15.5	2.4	4.8	0.0	9.5	0.0	0.0
	Ocp	1.0	1.9	1.7	6.9	9.0	2.0	0.0	11.6	0.0	0.0
0800-0900	Pro	3.3	66.7	22.9	1.9	1.0	2.9	0.5	1.0	0.0	0.0
	Ocp	1.0	1.3	2.1	5.0	8.5	1.5	1.0	1.0	0.0	0.0
0900-1000	Pro	1.1	53.5	29.7	0.5	2.7	10.3	1.1	1.1	0.0	0.0
	Ocp	1.0	1.4	1.7	10.0	9.0	1.7	1.0	5.5	0.0	0.0
1000-1100	Pro	1.3	45.5	35.9	1.3	0.6	14.7	0.0	0.6	0.0	0.0
	Ocp	1.0	1.6	1.7	6.0	8.0	1.2	0.0	1.0	0.0	0.0
1100-1200	Pro	1.3	54.5	24.7	2.6	1.3	12.3	1.3	1.9	0.0	0.0
	Ocp	1.0	1.4	2.1	2.5	11.5	1.6	1.0	25.3	0.0	0.0
1200-1300	Pro	3.5	50.6	24.4	3.5	1.2	15.7	0.0	1.2	0.0	0.0
	Ocp	1.0	1.4	2.0	3.0	15.5	1.5	0.0	15.0	0.0	0.0
1300-1400	Pro	1.5	57.4	25.0	0.7	2.2	12.5	0.0	0.7	0.0	0.0
	Ocp	1.0	1.6	2.0	3.0	8.0	1.4	0.0	17.0	0.0	0.0
1400-1500	Pro	2.1	52.8	27.8	3.5	1.4	11.1	1.4	0.0	0.0	0.0
	Ocp	1.3	1.6	1.8	2.2	6.5	1.9	1.0	0.0	0.0	0.0
1500-1600 Peak hour	Pro	2.7	60.4	23.5	2.0	0.7	6.7	0.0	4.0	0.0	0.0
	Ocp	1.0	1.6	2.1	4.7	10.0	1.6	0.0	19.5	0.0	0.0
1600-1700	Pro	1.0	62.9	21.3	2.0	0.0	9.1	0.0	3.6	0.0	0.0
	Ocp	1.0	1.7	2.0	7.5	0.0	2.0	0.0	3.0	0.0	0.0
1700-1800	Pro	4.7	62.0	25.1	1.2	1.2	4.1	0.0	1.8	0.0	0.0
	Ocp	1.3	1.5	1.9	2.5	10.5	1.6	0.0	2.7	0.0	0.0
1800-1900	Pro	4.8	58.1	30.6	0.0	1.6	3.8	0.5	0.5	0.0	0.0
	Ocp	1.0	1.5	2.0	0.0	9.0	1.1	1.0	3.0	0.0	0.0
1900-2000	Pro	2.5	66.3	26.4	0.0	1.8	1.8	0.0	1.2	0.0	0.0
	Ocp	1.0	1.3	2.0	0.0	9.0	1.7	0.0	1.0	0.0	0.0
2000-2100	Pro	1.0	63.9	30.9	0.0	2.1	2.1	0.0	0.0	0.0	0.0
	Ocp	1.0	1.5	1.7	0.0	4.5	1.0	0.0	0.0	0.0	0.0
2100-2200	Pro	4.4	44.1	45.6	0.0	4.4	1.5	0.0	0.0	0.0	0.0
	Ocp	1.0	1.4	1.7	0.0	4.3	2.0	0.0	0.0	0.0	0.0
2200-2300	Pro	1.9	53.7	42.6	0.0	0.0	1.9	0.0	0.0	0.0	0.0
	Ocp	1.0	1.5	1.8	0.0	0.0	5.0	0.0	0.0	0.0	0.0
16 hours	Pro	2.6	56.7	27.6	1.9	1.4	7.7	0.3	1.6	0.0	0.0
	Ocp	1.1	1.5	1.9	5.0	8.7	1.6	1.0	10.0	0.0	0.0

Legend

Pro. Proportion of vehicles in % (Sum may not add up to 100% due to figure rounding)*

Ocp. Average occupancy of vehicles including both driver and passengers*

M&H Medium and Heavy

***** All traffic data are collected from combined bounds except for one way traffic